

3Way Stainless steel valve(SUS304)

GXF-S



■ Description

GXF-S. Stainless Steel Valve is designed for 3-way Flange type valve which can be assembled with GEA series of Actuators using for Product Facilities, Food Industry and cold / hot water, steam line and also can be used with GEA-PD(Digital Electric Actuators) as Stainless Steel valve.

▶ Nominal Stroke

DN 20 ~ DN 50 : 20 mm

DN 65 ~ DN150 : 40 mm

DN 200, DN250 : 60 mm

■ Technical Data

▶ Operating pressure : 10 Kgf/cm²

▶ Operating temperature : -20 ~ 150°C DIN4747 / DIN3158

▶ Valve curve : Linear

▶ Leakage rate : Through-port 0... 0.01% of Kvs value Class IV By-Pass 0.5... 1% of Kvs value

▶ Connection : JIS 10K RF (JIS B2220)

● Close-off Pressure

Model	DN mm	Flow		Stroke mm	Sv	ΔPv	Actuator ΔPmax(Kgf/cm ²)				
		Kv	Cv				GEA-20	-35	-55	-100	-250
GXF-S 20	20	5.6	6.5	20	50	10	10	-	-	-	-
GXF-S 25	25	10.6	12.4	20	50	10	10	-	-	-	-
GXF-S 40	40	25.4	29.6	20	50	10	10	-	-	-	-
GXF-S 50	50	38.8	45.3	20	50	6	8	-	-	-	-
GXF-S 65	65	64.2	74.9	40	50	5	-	8.1	-	-	-
GXF-S 80	80	90.5	105.6	40	50	4	-	5.4	-	-	-
GXF-S100	100	130.2	151.9	40	50	4	-	3.4	-	-	-
GXF-S125	125	188.0	219.4	40	50	4	-	-	3.4	-	-
GXF-S150	150	283.0	330.3	40	50	3.5	-	-	2.4	-	-
GXF-S200	200	594.0	696.0	60	50	3	-	-	-	2.4	6.1
GXF-S250	250	906.0	1,057	60	50	3	-	-	-	-	3.9

Sv : Rangeability (VDI 2173)

ΔPV in Kgf/cm² = Difference pressure across fully open valve on installation with full load.

ΔPV MAX in Kgf/cm² = MAX, permissible differential pressure across closed Valve

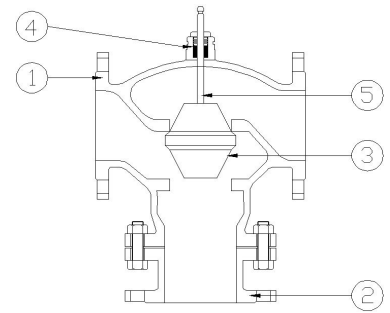
Please indicate Valve model at order in case of assembling with GEA-35PD(A) or GEA-55P(A) of 20mm stroke.

3Way Stainless steel valve(SUS304)

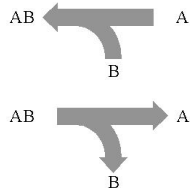
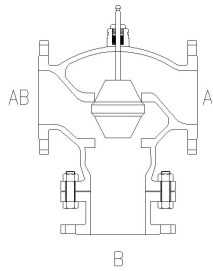
GXF-S

Materials

NO	1	2	3	4	5
Part Name	Body	Bonnet	DISC	PACKING (GASKET)	STEM
Material	SCS13 (SUS304)	SCS13 (SUS304)	STS304	PTFE	STS304



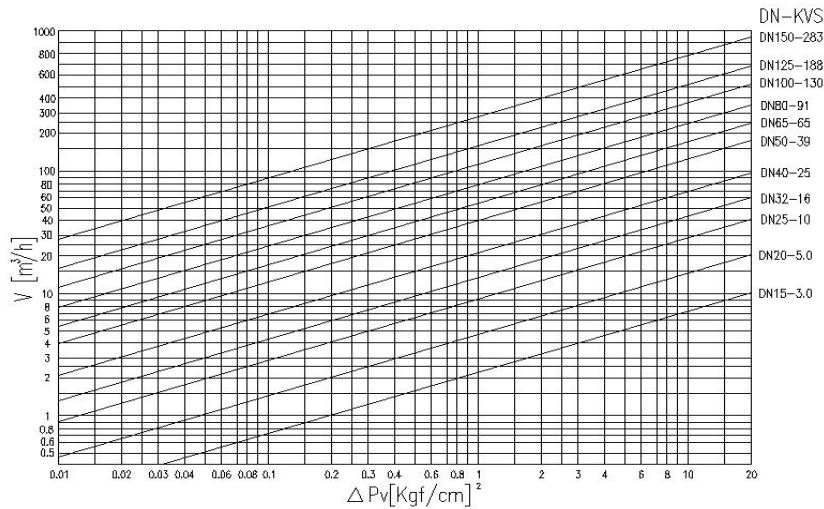
Mechanical Data



- ▶ Plug should be connected directly with valve stem.
- ▶ could be used both Mixing and Diverting type.

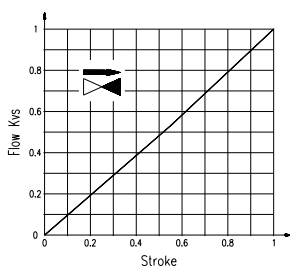
Valve Sizing Chart

Flow Diagram



V : WATER FLOW (m³/h)
 ΔP_V : VALVE PRESSURE DROP (Kgf/cm²)

Valve Curve



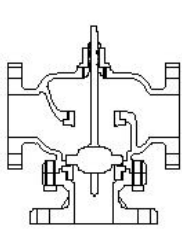
- ▶ Though-port: Linear
- By-pass : Linear
- ▶ rangeability - 50:1

3Way Stainless steel valve(SUS304)

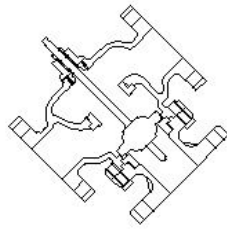
GXF-S

■ Mounting and Installation Guide

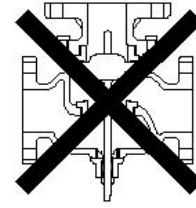
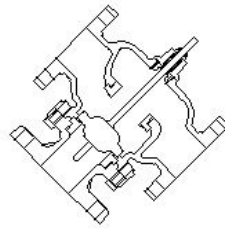
▶ Please always install a Strainer and install at fitting opening for better safety of operation.



<permitted>



<minimum allowed condition>



<not permitted>

▶ The Valve should be installed with the same direction of Fluid flow.

■ Commissioning Guide

▶ The first run should be conducted only when the Actuator is mounted on the valve correctly.

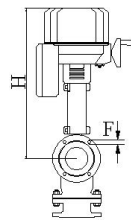
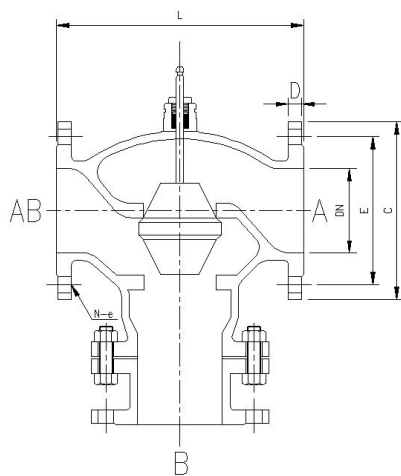
1. Valve shaft goes down : Through-port Open , Bypass Close
2. Valve shaft goes up : Through-port Close , Bypass Open

■ Check

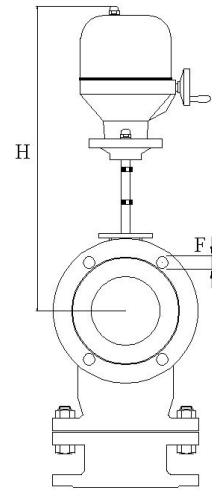
▶ In case of damaging the packing box of the Valve, this can be substituted without removing the Valve body.

▶ The packing box can be used for - 10 ~ +150°C of Fluids (Cold, Chilled, Hot water * Steam).

■ Dimensions



(GEA-20, 35)



(GEA-55,100,250)

Model	DN	L	C	D	E	F	Bolt Size	H					Weight Valve(Kg)
								GEA-20	-35	GEA-55	GEA-100	-250	
GXF-S 20	20	117	100	14	75	15×4	M12	300	-	-	-	-	8.0
GXF-S 25	25	127	125	14	90	19×4	M16	320	-	-	-	-	9.2
GXF-S 40	40	161	140	16	105	19×4	M16	333	-	-	-	-	15.0
GXF-S 50	50	200	155	16	120	19×4	M16	340	-	-	-	-	18.0
GXF-S 65	65	212	175	18	140	19×4	M16	-	385	-	-	-	23.0
GXF-S 80	80	241	185	18	150	19×8	M16	-	410	-	-	-	28.0
GXF-S100	100	292	210	18	175	19×8	M16	-	445	-	-	-	35.0
GXF-S125	125	356	250	20	210	23×8	M20	-	450	710	-	-	49.0
GXF-S150	150	406	280	22	240	23×8	M20	-	465	765	-	-	69.0
GXF-S200	200	495	330	22	290	23×12	M20	-	-	-	880	-	180.0
GXF-S250	250	622	400	24	355	25×12	M22	-	-	-	-	927	275.0