

PROPORTIONAL DAMPER ACTUATOR

(GDA-30P)



Description

GDA-30P is motor actuated proportional damper actuator controlled by the signal DC 0 ~10V or 4 ~ 20mA, and designed for damper control in HVAC system and can provide DC 0 ~10V position feedback signal.

Usage

- ▶ Used for operating damper for ventilating and Air handling facilities.
- ▶ Nominal Torque is 30Nm and can be covered damper surface area for 4m².
- ▶ Proportional operation will be activated by DC 0 ~10V or 4 ~ 20mA and possible to be DC 0 ~ 10V position feedback signal output.

Function

- ▶ Damper rotation can be selectable direction (CW or CCW) by jumper PIN.
- ▶ Damper moves by control signal that it maintains same position unless changing control signal.
- ▶ When operating power is at normal and at no control signal, actuator moves to the direction of " 0°" or " 90°" (operating direction can be changed by jumper PIN).
- ▶ When power is OFF, Actuator will be stopped at current position.

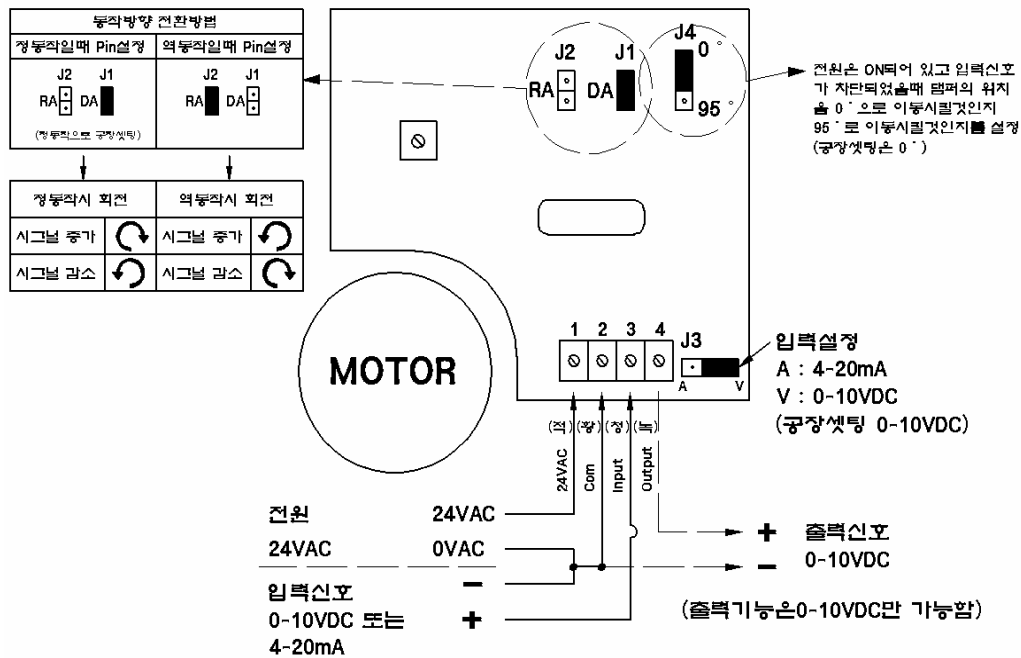
TECHNICAL DATA

Model(optional)	GDA-30P
Supply Voltage	AC 24V ±10%
Frequency	50 / 60 Hz
Power Consumption	5VA (3W)
Control Signal	DC 0~10V or 4~20mA
Positioning Accuracy	±5%
Nominal Torque	30 Nm
Nominal Rotating Range	0 ~ 90°
Mechanical Rotating Range	95°±2° (mechanical control limit at 95°)
Rotating Direction	Direct / Reverse Action (built-in direction converting PIN)
Operating Time	140 sec. (30Nm)
Operating Condition	:-30 ~ +50°C, below 95%RH
Connecting Cable	0.5sq.mm ~ 1.5mm
Noise Degree	45 dB
Protection Class	IP 42
Weight	1.72 Kg

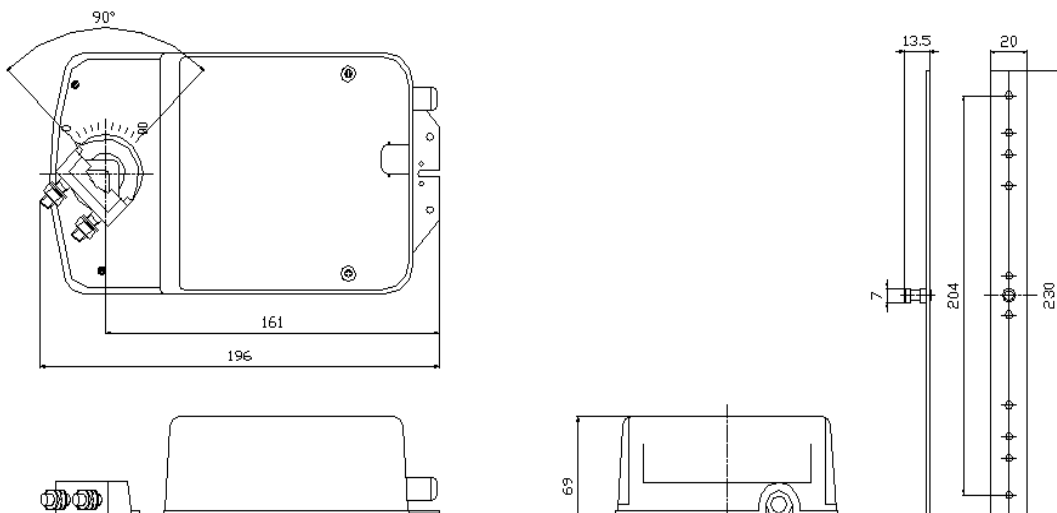
Mounting Notes

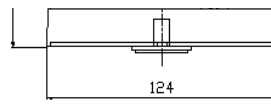
- ▶ **Mounting Bracket:**To mount actuator on damper axis directly, it must be used bracket, and fixing pin of mounting bracket should be correctly fixed into the groove of Actuator.
- ▶ **Mounting Location:**Select easy location for setting dial of front side of actuator and cable connection.
- ▶ **Manual Control:**To adjust correct open/close function of switching location of damper, first to pre manual button according to mounting procedures and adjust shaft adaptor and location indicator.
- ▶ **Mechanical limitation for rotating degree movement:**can be limited rotating degree movement by 5° between 0° to 90°.

Wiring Diagram



Dimension





3SS